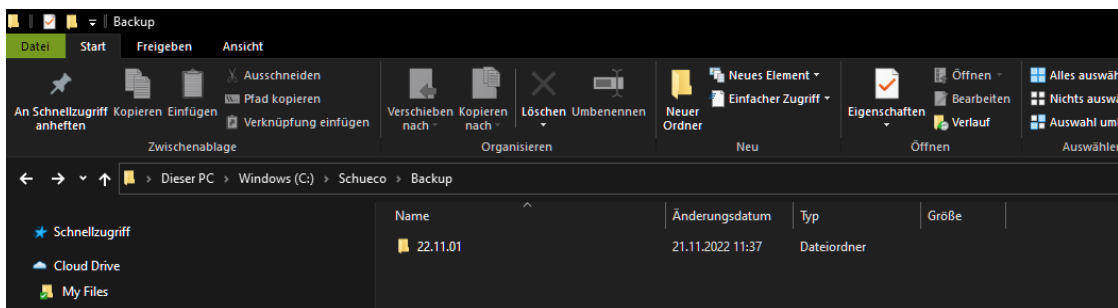


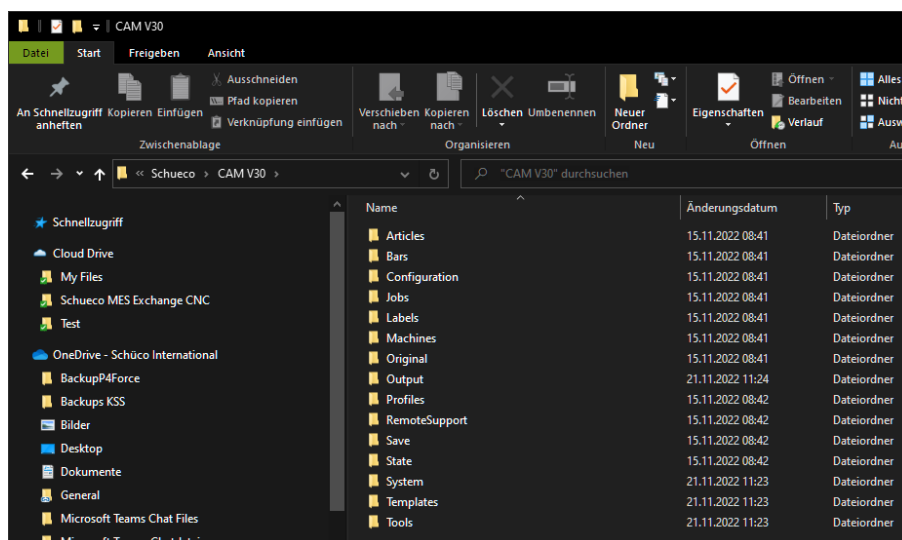
Help!

Machine Data is corrupt or Information is Missing after an CAM-Update

1. The Folder „C:\Schueco\Backup“ is used to save Data from a previous version with every new installation. It contains Folders referring to old Version Numbers. If the old version is corrupt, the Files are saved in a directory called “Archive”.



2. Following directories are included:
 - a. Database (Schüco and customer)
 - b. Binary
 - c. Configuration
 - d. Job
 - e. Labels
 - f. Machineconfiguration
 - g. Output
 - h. Status
3. If you want to use files from an old Version, you have to copy them to the Installation directory, the default path is „C:\Schueco\CAM V30“.



Rescue Machine Data

- Copy the Content of the Folder „C:\Schueco\Backup\Machines“ in the corresponding Folder „C:\Schueco\CAM V30\ Machines“