

## General

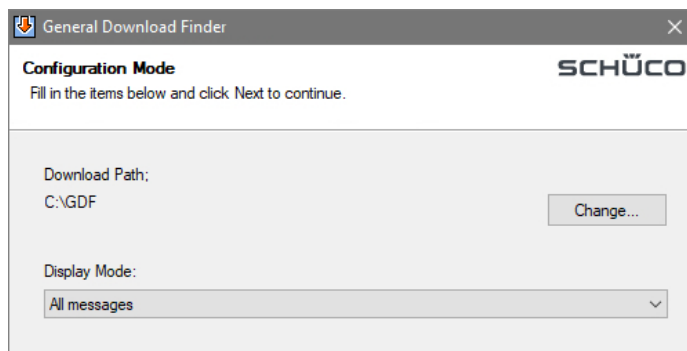
Do you want to provide updates for your Schüco software centrally in your company's internal network? The General Download Finder (GDF) supports you efficiently in your work. You do not even have to install the Schüco software yourself - the GDF is completely sufficient.

Integrate the GDF into your Windows Task Scheduler and the file downloads are done automatically.

## Installation

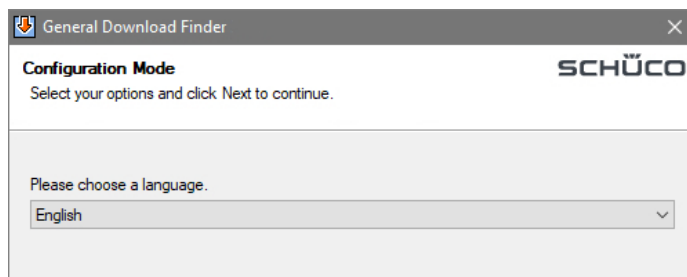
The installation is done using the setup file of the GDF. The installation program guides you through the necessary installation steps. Generally, you just have to select the language and the target path for the GDF installation.

## Configuration



After you start the GDF for the first time, the configuration is automatically called up and determined in four more steps.

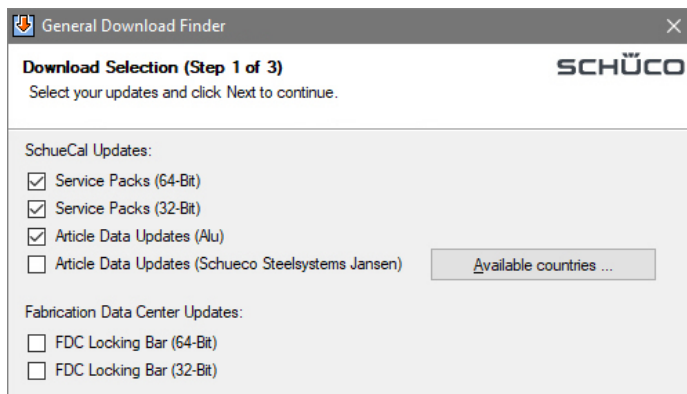
First select the installation language. The following options are available: *English, French and German.*



In the next step of the **Configuration Mode**, you determine the *Download Path* - as this is the target directory, to which the files will be saved.

Next, you determine which messages you want to receive. You can choose from the following options:

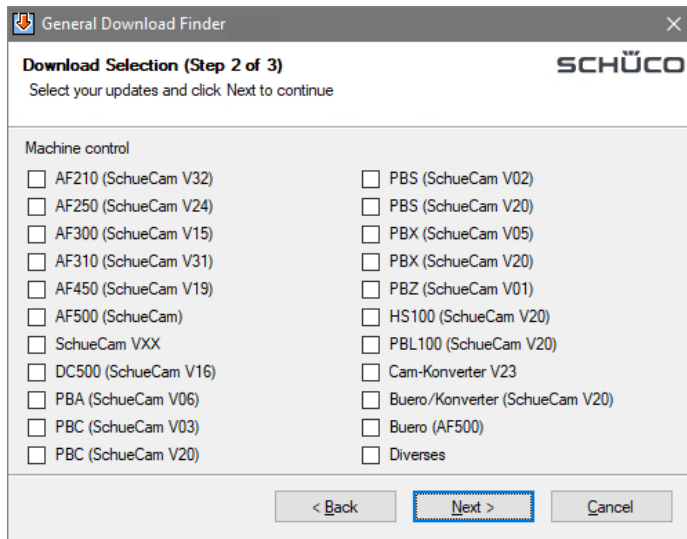
- *All messages*
- *Notification only after successful download*
- *No messages*



### Download Selection (I)

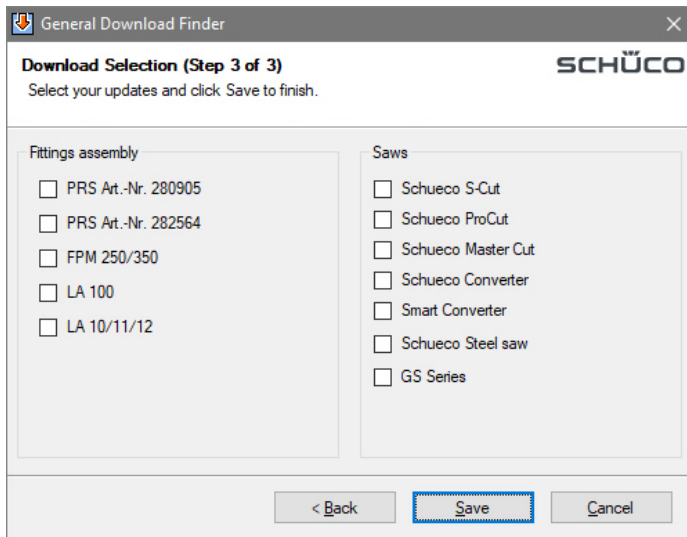
In this dialog you define which SchüCal updates are to be loaded:

1. Service Packs (64-bit / 32-bit)
2. Article data updates for aluminum / steel
3. FDC Updates (64-bit / 32-bit)



### Download Selection (II)

In this step, you determine those machines whose control updates have to be integrated into the Download Finder routine.



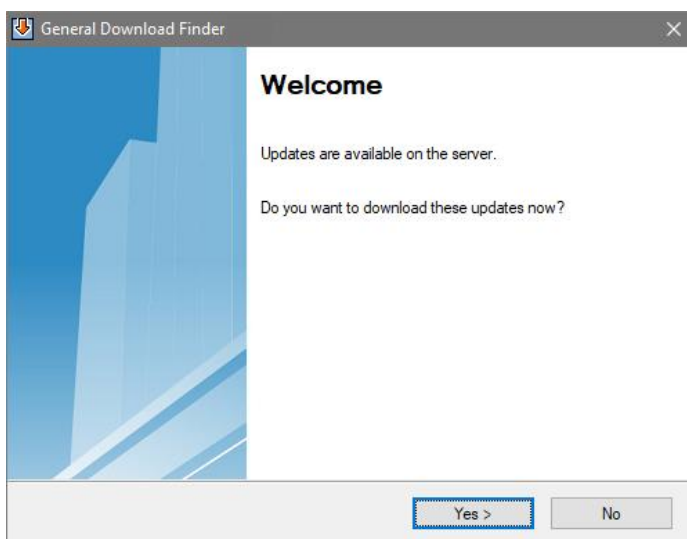
### Download Selection (III)

In the final step, determine which machines for the fittings assemblies and which saws have to be considered for the control updates. Subsequently click on *Save* to store your configuration.

If you'd like to apply some later changes to your configuration it's rather easy to start the GDF:

**"Start -> Schueco -> GDF Settings"**

## Search for updates

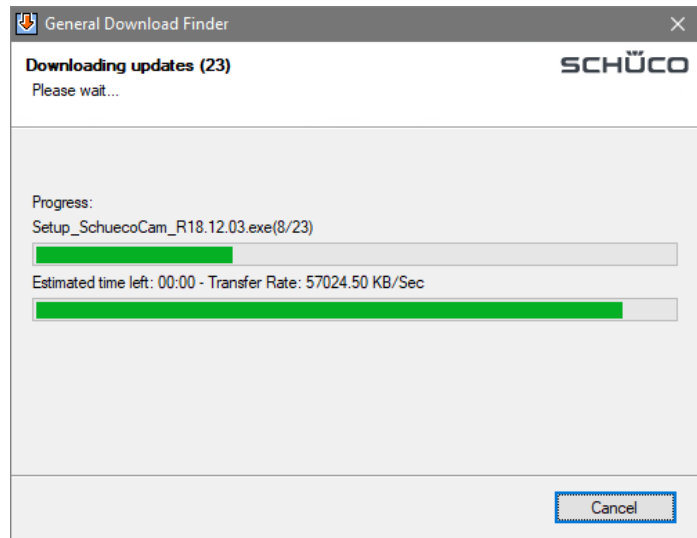


To search for updates, please start the GDF.

If you selected the *All Messages* option, the system shows this message (on the left) if there are updates available.

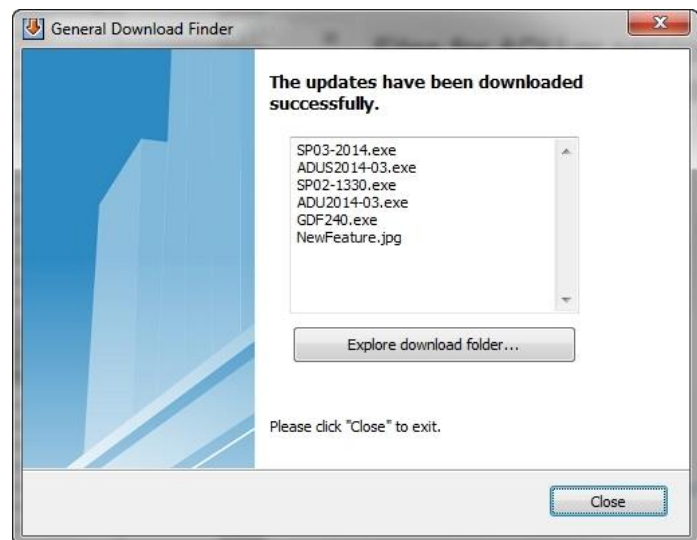
If there are no updates available, the program closes without displaying any messages.

Depending on the settings, the updates are downloaded and stored in the path you specified.



When the download is complete, the system displays a completion message. For your information the successfully downloaded files are listed.

For further processing, click on "Explore download folder" to open the Windows Explorer in the download folder.



*Depending on the configuration setting, the system might not display all of these screens.*

## Automate the search for updates

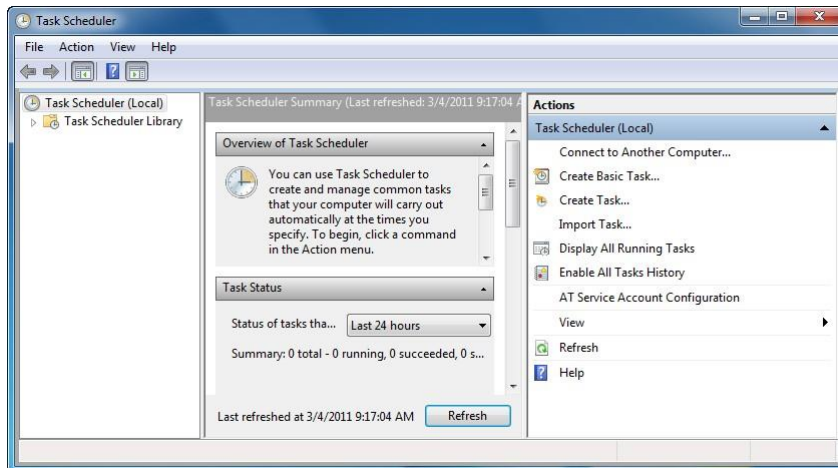
To automate the search for updates, you have to include the GDF in the task scheduling of the operating system. Here is an example of how to set up this task for **Windows 7**.

### Note for Windows 10 and Windows 8.x:

Functionally, the task planning is identical to the planning described here on **Windows 7**. Only the design of the dialogs differs slightly.

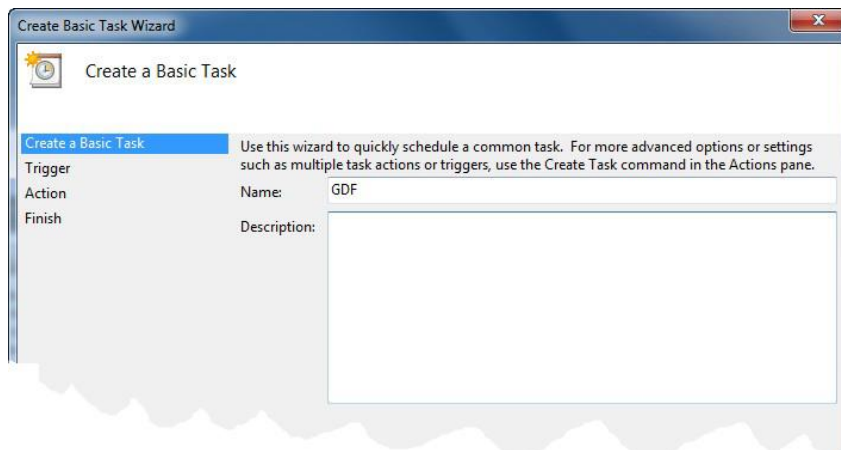
### Windows 7: Task Scheduler

Start the Windows Task Scheduler. You can find it by entering the term "Task Scheduler" in the Start menu. (Windows 7: Open the following dialog via "Start ► Control Panel ► System and Security ► Administration ► Schedule Tasks").



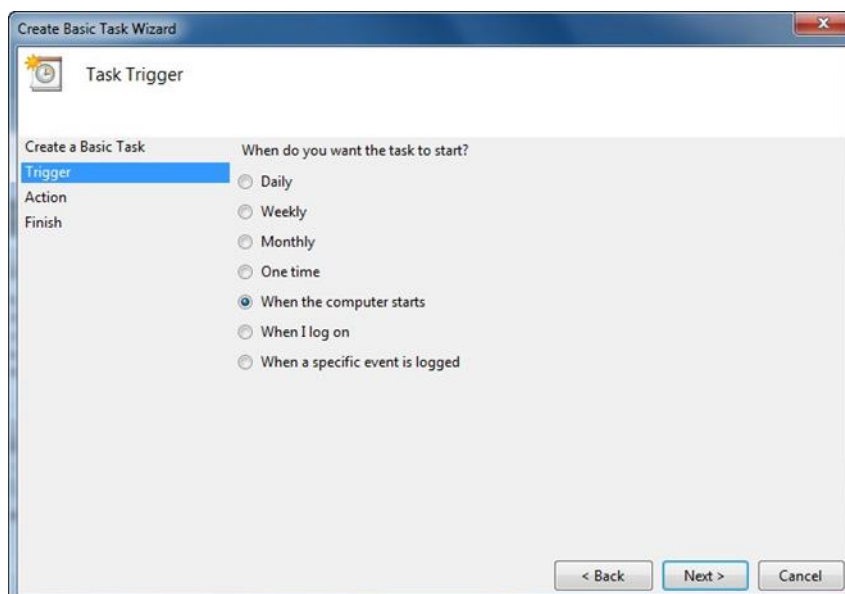
**Start the Task Wizard:**

Click on "Create Basic Task..." to start the wizard.



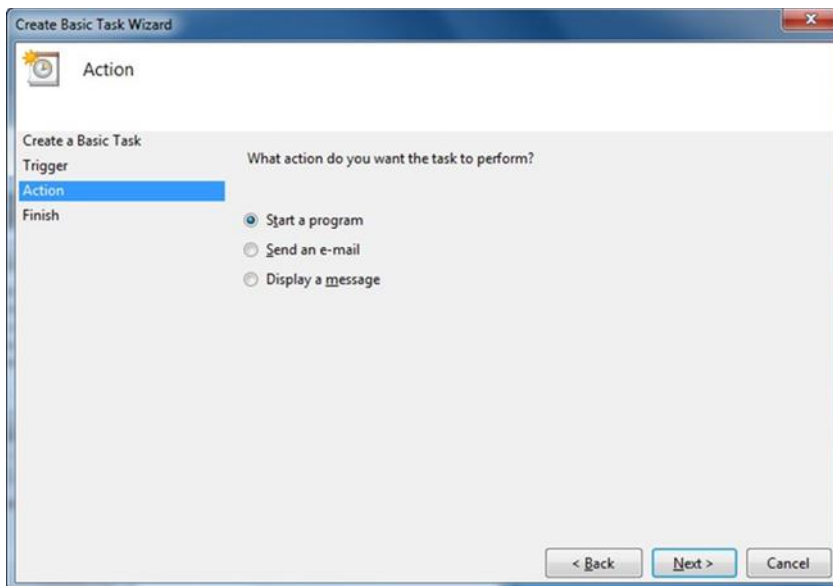
**Give the new task a name:**

Please follow the instructions of the wizard. Click on "Next" to get to the next dialog box. Give the new task a clear name, e.g. "GDF".



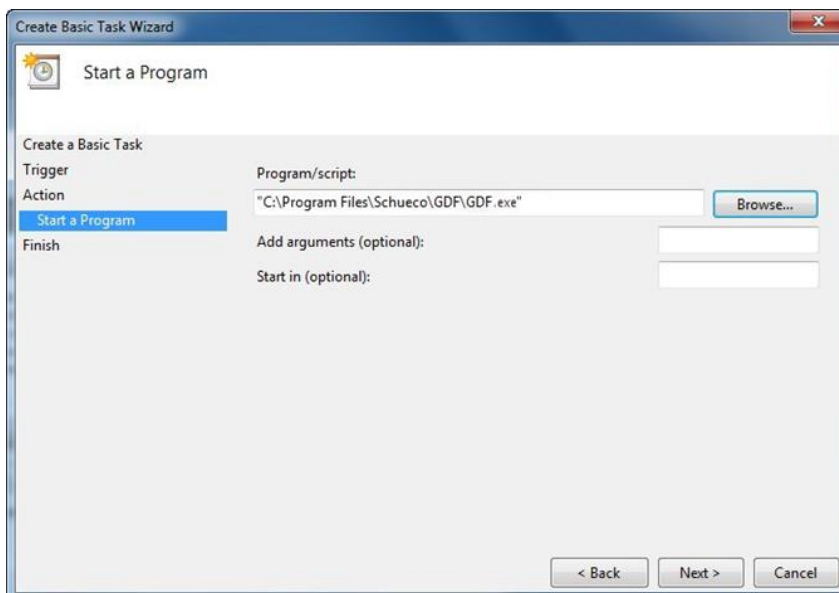
**Determine the start of the new task:**

In the second step please choose the option "When the computer starts".



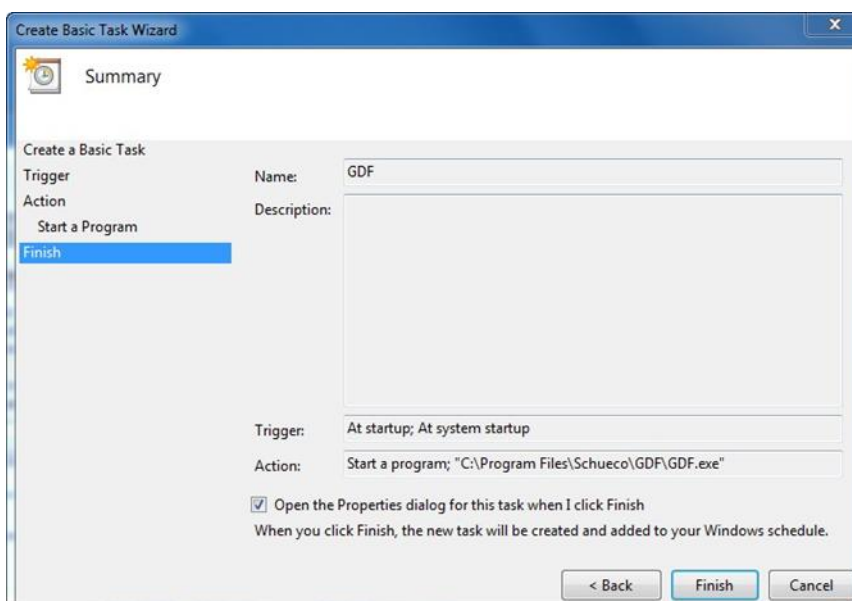
Determine the action the new task shall perform:

Please select "Start a program".



Define the program to be started:

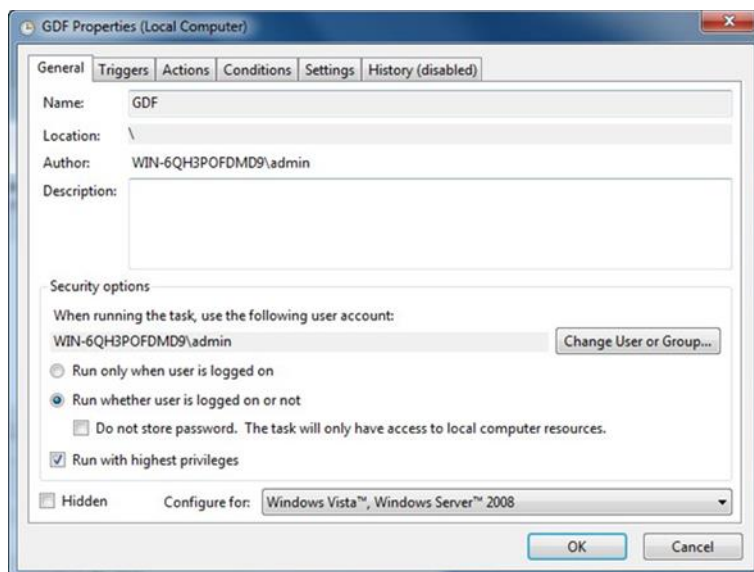
In this step click on "Browse" to start the file explorer dialog to define the *GDF.exe* as the program to be started in this task.



**Summary:**

The task is completed in step five. To enter detailed settings, please activate the check box "Open the Properties dialog for this task when I click Finish".

Subsequently click on "Finish".

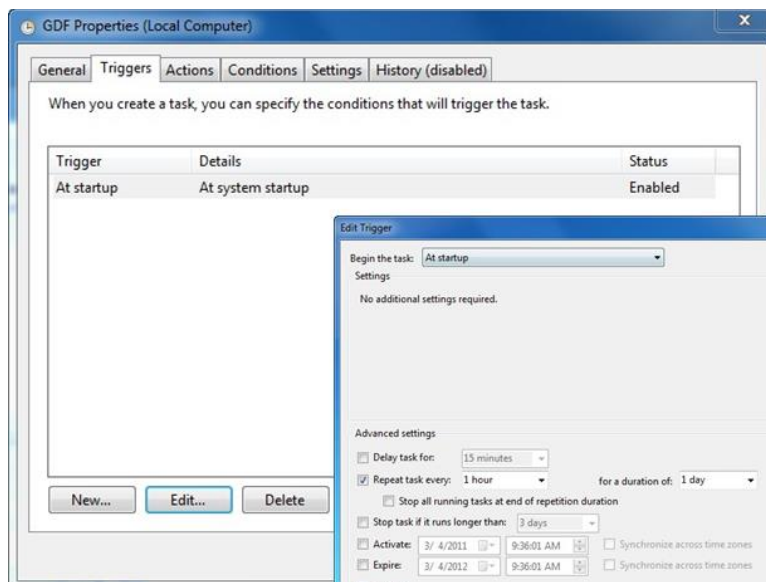


The properties dialog allows you to specify the time plan and to set security options as well as the repetition interval.

### Tab "General":

In the "Security options" section determine the user who is allowed to run this task.

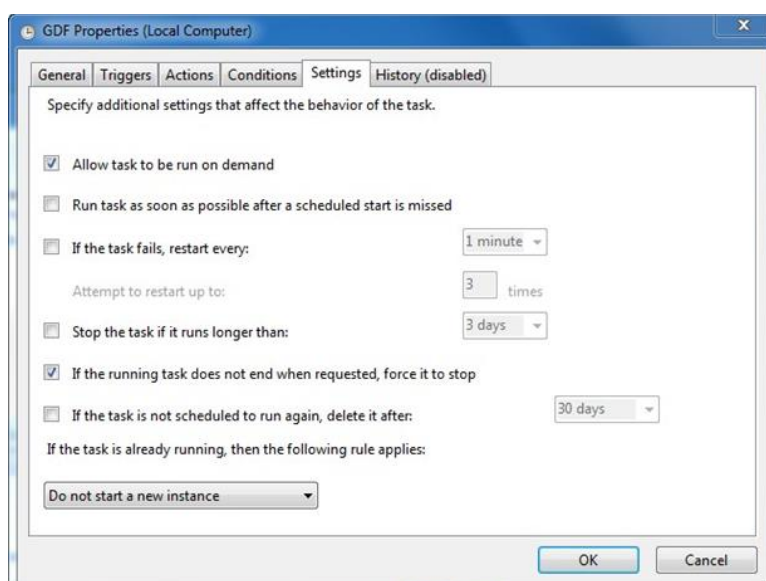
Activate the check box "Run whether user is logged on or not".



### Tab "Trigger":

Here you can edit the trigger to customize the new task to meet your needs concerning repetition etc..

Select the trigger, click on "Edit..." and edit the necessary settings in the dialog box "Edit trigger".



### Tab "Settings":

Disable the checkbox "If the task fails, restart every:".

As a consequence this setting prevents a scheduled task to be terminated automatically if you use the GDF on a server.

Finally confirm by click on "OK".