

BVH: **Delta District**

Program version: **SchüCal 2024 R2 / 2025 R1**

System: **Schüco USC 65.HI**

Editor: Clemens Schwarzingner

Tel: +43 1 98130-236

Version: V07

Due date: 21.01.2025 / 04.02.2025 / 10.02.2025 / 03.03.2025
06.03.2025 / 23.07.2025 / 22.08.2025

Item overview

Special item	Half-shell internal	Half-shell external	SchüCal item	Designation / Use
9660391			9660391	Transom
9660395			9660395	Frame
9660396			9660396	Glazing Bead
9660397	9660392	9660393	9660397	Frame
9660398	9660394	9660393	9660398	Frame
9660401	9660399	9660400	9660401	Frame
9660403	9660402	9660393	9660403	Frame
9660405	9660404	9660400	9660405	Frame
9660406			9660406	Frame
9660407			9660407	Pressure Plate
9660408			9660408	Gasket
9660563			9660563	Isolator
9626366			9626366	Pressure Plate
9626367			9626367	Glazing Bead
9639794			9639794	Gasket
V8-1345			V81345	Gasket

Remarks:

- The data supplied has been prepared and checked for use in work preparation (production lists and saw control), but not for the control of profile machining centres. If necessary, we can check the possibilities for controlling profile machining centres and create a corresponding proposal.
- Item information, such as price, VE, must be clarified before ordering with our purchasing and, if necessary, adjusted in the item management. At the time of implementation, still partly unknown!
- The following drawings are the basis for the implementation:
 - DD_B drawings update_241217.dwg

For input support, reference elements with corresponding technical settings have been created (see SchüCal data backup). These must be changed and checked prior to use on the respective installation situation. The input is basically similar to standard profile systems. However, the following notes should be observed:

Notes for Flat Elements

- **Glazing:** 59 mm
- **Transom 9660391**
glazing bead = 162180X
→ pressure plate 477660
→ Article 162180X will be changed to 162180 on the output lists automatically
- **Manual adaption of Articles:**
 - Transom 9660391: Number of Screws 225174 for Isolator
 - Number of Glass support 268611
 - Transom cover cap 162180: Number of security screws 205080
 - Pressure plate 9626366 for glazing bead: Number of mounting screws 225078 and security screws 205081

Notes for Bended Elements

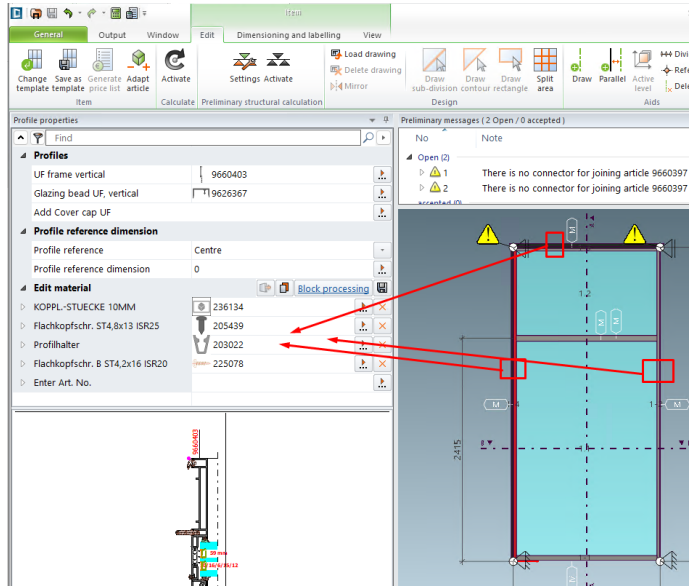
- **Glazing:** for 59 mm wet glazing → 60 mm glazing in SchüCal
- **Transom 9660391**
glazing bead = 162180X
→ pressure plate 477660
→ Article 162180X will be changed to 162180 on the output lists automatically
- **Manual adaption of Articles:**
 - Transom 9660391: Number of Screws 225174 for Isolator
 - Number of Glass support 268611
 - Transom cover cap 162180: Number of security screws 205080
 - Pressure plate 9626366 for glazing bead: Number of mounting screws 225078 and security screws 205081
 - **Frame 9660401** (bottom):
 - Glazing bead = 112720X
→ pressure plate 9626366
→ Article 112720X will be changed to 112720 on the output lists automatically
 - Number of mounting screws 225078
 - Number of cover cap 207136
 - Number of security screws 205080 for cover profile 112720

The data has been adapted to the reference modules in the above-mentioned version, and any deviation (e.g. glass thicknesses or profiles) must be checked by the user.

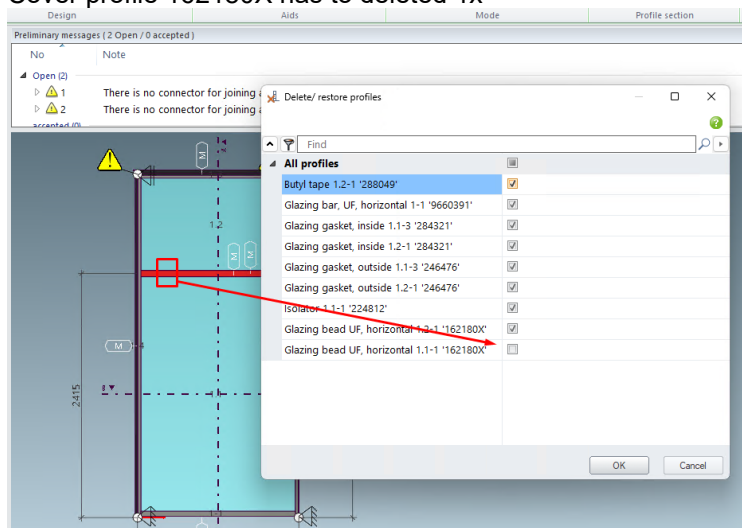
We have carried out the input carefully, but we do not guarantee the accuracy and completeness of the results. In order to ensure faultless serial production, the manufacturing of a sample module by the processor is absolutely necessary, as well as a detailed data check. We will be happy to answer any questions you may have.

Notes V02: 04.02.2025

- **Frame 9660403:**
4x 236134, 16x 205439 are calculated
- **Pressure Plate 9626366**
the following articles have to be added manually (Function "edit material")
 - 203022 Glazing bead fixing
 - 225078 screw



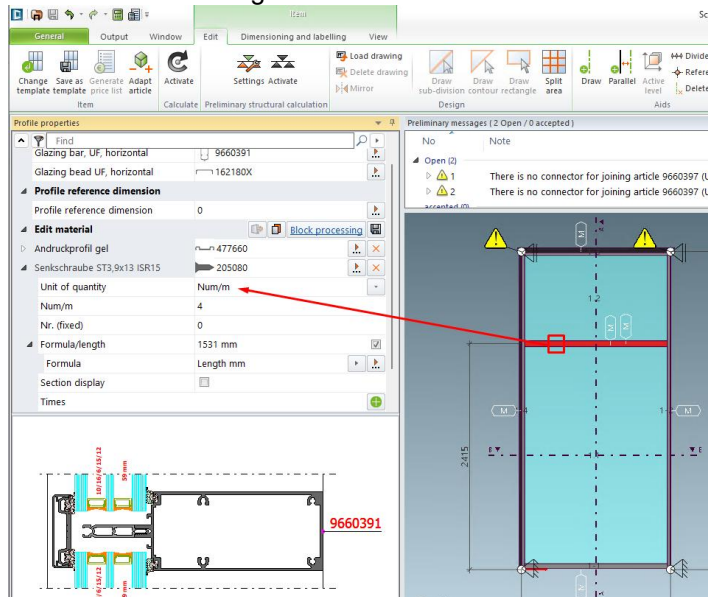
- **Transom 9660391**
 - Butyl Tape 288049 added
 - Cover profile 162180X has to be deleted 1x



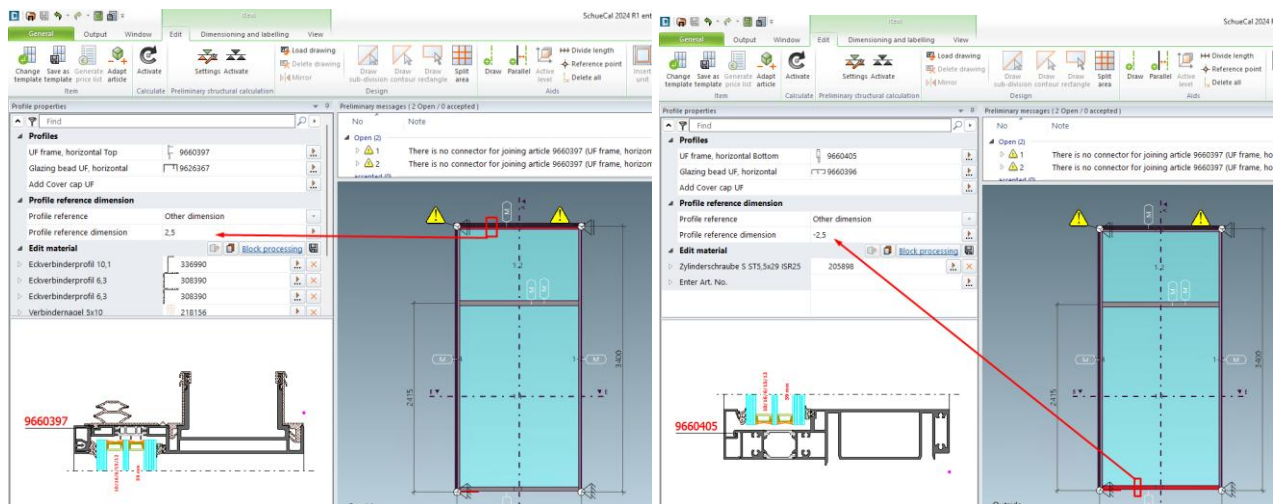
- **Frame 9660397**
Nails 218156 and 218892 added

Special construction

- Pressure Plate 477660
Screw 205080: change in "edit material" to num/m

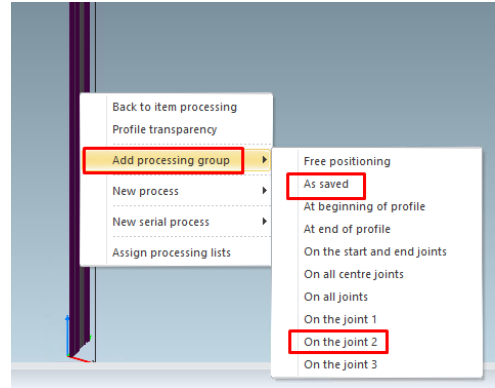


- Frame bottom/top:
reference point has to be changed manually +/- 2,5mm: for the correct gap of 25mm



Notes V03: 10.02.2025

- **PU changes:**
V891345: VE = 25m
9639794: VE = 30m
- **MCO Processings** – according Drawing „Delta District cutting + processing.dwg“
Processing groups for var. profiles:
 - Frame 9660403:
add group “as saved”
 - 9660403 Bottom processings
 - 9660403 Bracket connection
 - 9660403 Canopy holder
 - 9660403 Composite bracing
 - 9660403 Connection Frame Top 9660397
 - 9660403 Spigot connection
 - add group “On the joint 2”
 - 9660403 Connection Transom 9660391
 - Frame 9660397
add group “as saved”
 - 9660397 Frame Top
 - Frame 9660405:
add group “as saved”
 - 9660405 Frame Bottom
 - Glazing Bead 9660396
add group “as saved”
 - 9660396 Drainage

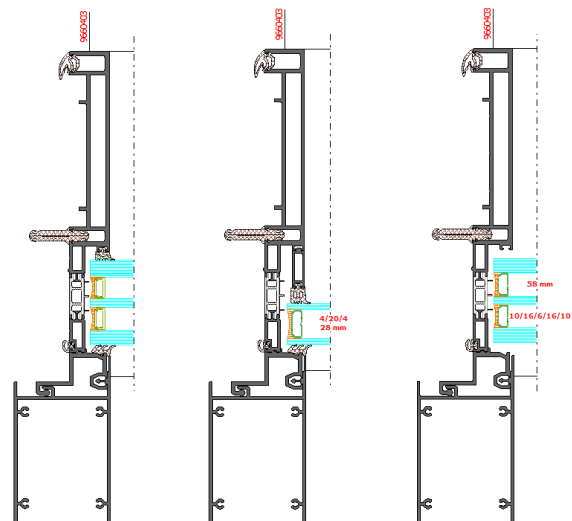


Notes V04: 03.03.2025

- Adaptions of MCO processings and processing groups
new and changed processing groups – exchange to old groups

Notes V05: 06.03.2025

- **Additional Glazing beads:**
 - 9660838 (+ 9660658) for vertical frame
- **Additional infills:**
 - 58mm = wet glazing
 - 28mm = glazing with gaskets
 - 27mm = wet glazing



Notes V06: 23.07.2025

▪ New Profiles

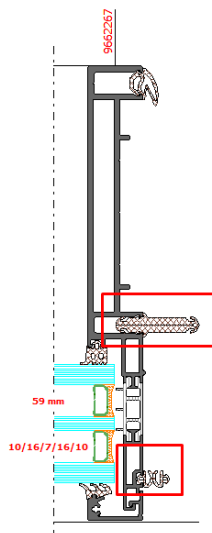
Special item	Half-shell internal	Half-shell external	SchüCal item	Designation / Use
9662267	9660402	9662266	9662267	Frame
9662753	9660402	9623346	9662753	Frame
9662472	9660392	9662266	9662472	Frame
9660396_201			9660396_201	Glazing Bead
9663587			9663587	Transom

▪ Glazing:

- 59 mm: Adaptation of gaskets
- 54mm: new

▪ Frame 9662267:

Gaskets have to be added or deleted manually based on the coupling



▪ Glazing bead 433270:

Additional article 266755 has to be added manually

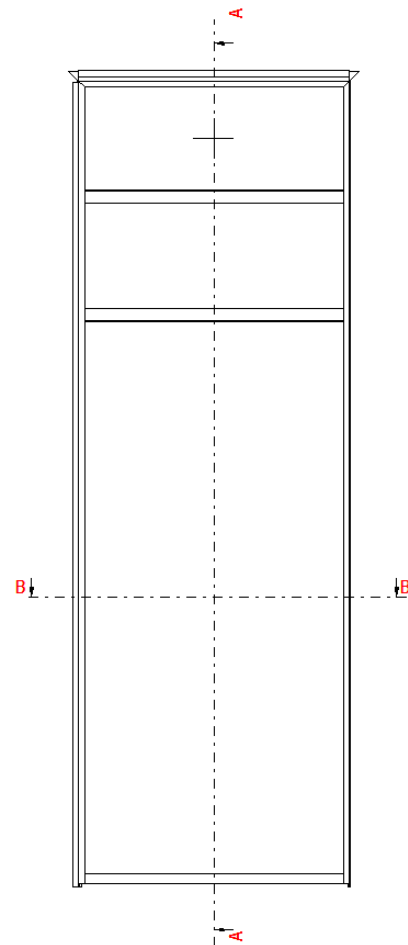
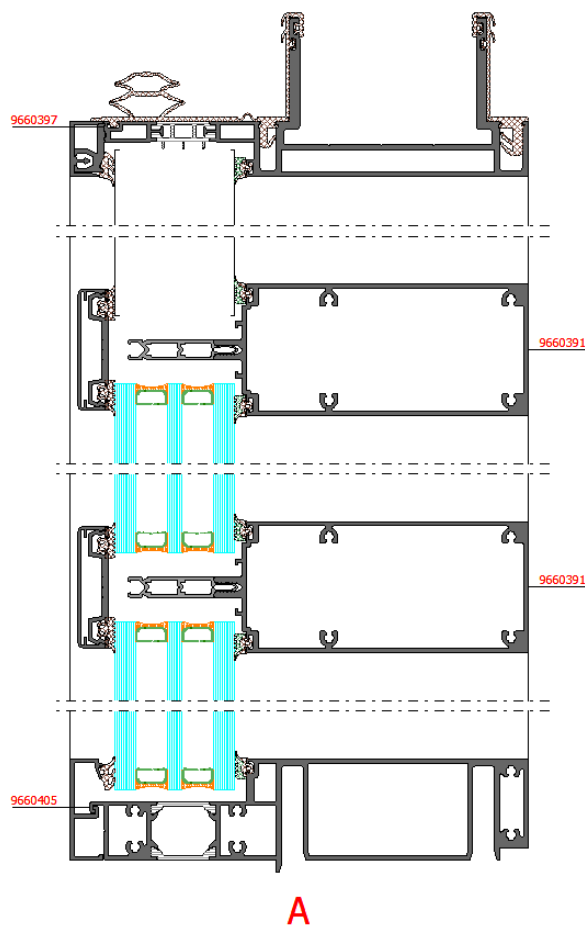
Notes V07: 22.08.2025

▪ Correction profil 9660391:

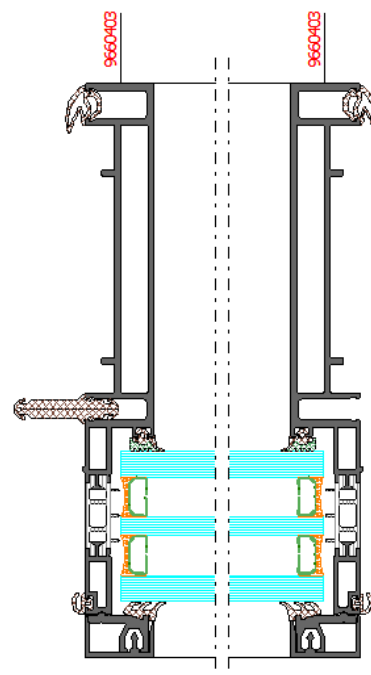
- Length
- Notching 17mm (instead of 17.5mm)

Reference modules

Project: V8 Delta District
Position: 01 – Flat Element



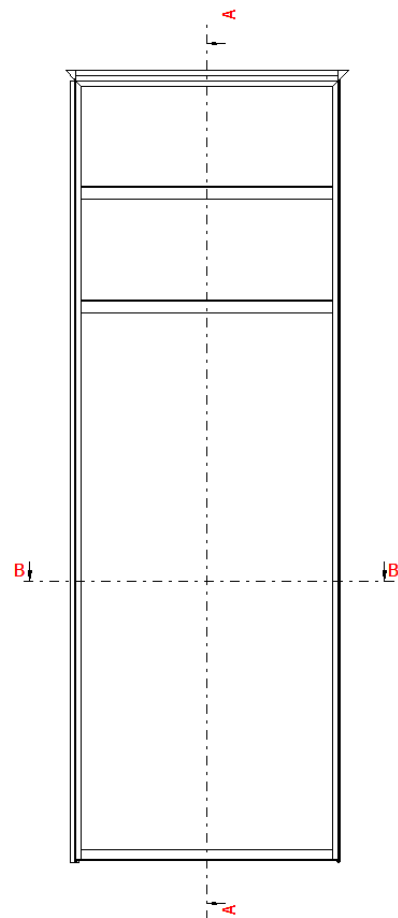
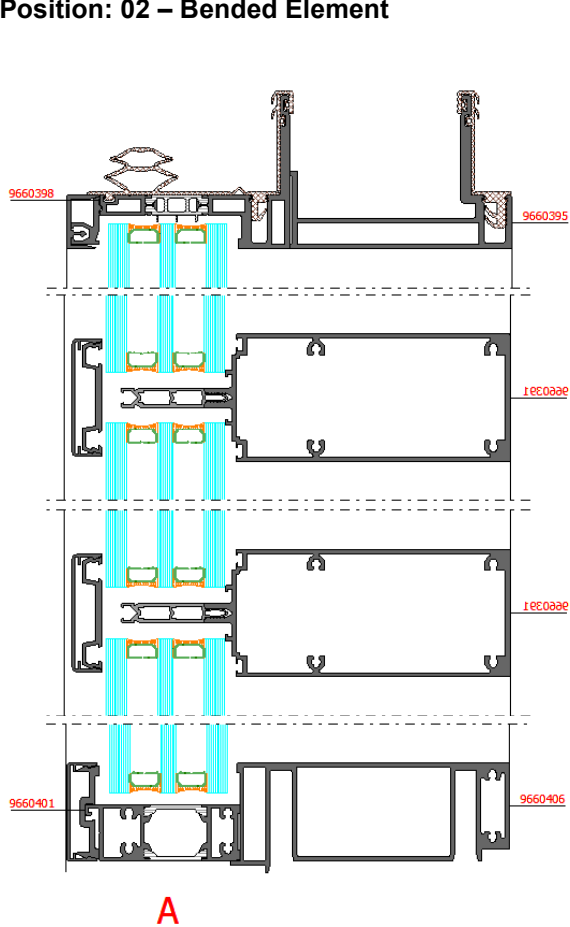
B



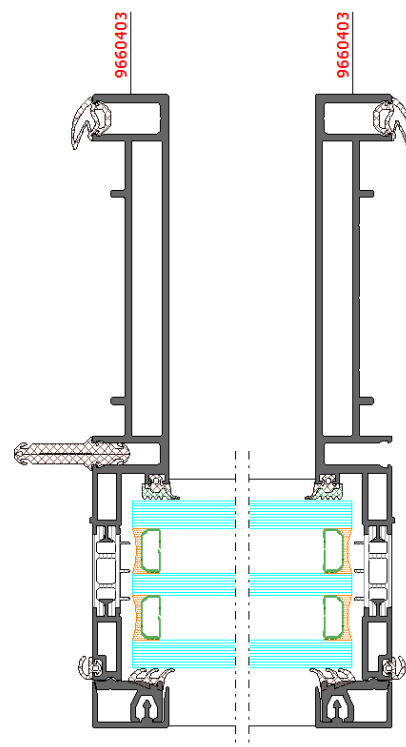
Reference modules

Project: V8 Delta District

Position: 02 – Bended Element



B



Conditions for implementing special items

INTEGRATION of SPECIAL ITEMS (profiles / accessories / fittings) into WORK PREPARATION in SchüCal

Software service for special items (SchüCal implementation)

1. Scope of services for the integration of SchüCal work preparation (excl. CAM)

1.1 Integration profile:

In the quoted lump sum per profile according to the enclosed offer, the costs for programming the special profile and its use in up to 2 different types of module in a construction project in SchüCal are included. A type of module is defined, for example, by different glass thicknesses, profile combinations and/or different types of opening (*types of opening = outward or inward opening, single or multi-leaf*).

1.2 Integration fittings / accessories:

In the quoted lump sum per item, according to the enclosed offer, are the costs for the programming of special fittings, special accessories or customised fittings for the input of this item in SchüCal article groups.

The integration of customer-specific door fitting items into the SchüCal door fitting manager requires a separate check and will be calculated after commissioning according to effort, at an hourly rate of 118.00 Euros. The data is valid for the current version of the program at the time of implementation. After a program upgrade, a new import into SchüCal with the supplied import files is required (see documentation on the item). Any necessary adjustment after a SchüCal program upgrade will be calculated after commissioning according to effort, at an hourly rate of 118.00 Euros.

The user thus has the possibility to generate output lists, like for the SchüCal standard systems, also for special constructions (*subject to a feasibility study and restrictions according to the offer*). These are:

- | | |
|-----------------------|--------------------|
| • Mass composition | • Cut optimisation |
| • Order quantity list | • Cut composition |
| • Glass arrangement | • Module overview |
| • Parts list | • Glass plans |
| • Calculation | • Infill plan |
| • Item drawing | |

Additional types of module are calculated according to effort, at an hourly rate of 118.00 Euros.

The geometry data required for processing on the machine (SchüCam) are provided in SchüCal and can be exported by the user and installed on the machine.

2. Scope of services machine control

2.1 SchüCal machine control of special profiles:

In addition, it is possible to implement special profiles for SchüCal machine control (MCo). This service is not included in this offer. If such an implementation is desired, we can offer it separately. The relevant programming will be charged after previous examination and a resulting offer calculated according to effort, at an hourly rate of 118.00 Euros. In the case of a commissioning, the programming for SchüCal MCo is executed according to the Schüco processing drawings. The mechanical machining operations are automatically generated in SchüCal or, if necessary, these are adjusted with SchüCal MCo-Filter and supplemented with processing lists. The data for the machine control have to be checked using a sample element before production. The data will be adjusted if necessary.

2.2 SchüCal machine control of customer-specific fittings (third-party fittings):

Furthermore, it is possible to implement customer-specific fittings for the machine control. This service is described in a separate offer.

2.3 Processing on the machine (SchüCam):

The Technical Customer Service can provide assistance for the processing on the machine, according to the "General Terms and Conditions of the Technical Customer Service" (see www.alukoenigstahl.com).

3. Conditions for implementation

For the integration of special designs, the "General Terms and Conditions of the AluKönigStahl GmbH Software Service for SCHÜCO" apply, as well as the conditions present here for the integration of special articles. In cases of contradictions, the latter precede the former. The tenders, order, feasibility tests, and integration of special products are made exclusively on the basis of the Terms and Conditions and the conditions for the integration of special articles, deviating conditions of the client are expressly not recognised. Regulations deviating in individual cases shall only apply if they have been agreed in writing.

When implementing special articles (special profiles / accessories / fittings), only system parts supplied by AKS are considered.

Accessory parts, such as fastening materials, insulation materials, etc. from third-party suppliers are not included, with the exception of customer-specific hardware items, which requires a separate offer (see below).

When implementing customer-specific hardware articles, the hardware components are recorded according to the specifications of the client (detailed installation drawings and details of the required mechanical processing).

Please note that due to programming reasons, special designs sometimes show up with differences compared to standard system input. These differences are to be taken into account above all with vulcanised sealing frames (cannot be determined), glazing (*glass blocks, glass overlay, glass strip holders may have to be manually deleted from the production lists*), hardware determinations (*special fittings are calculated via hardware groups*) or sliding constructions (*currently via Microsoft® Excel with subsequent import into SchüCal*). Further restrictions depend on the respective construction and can only be defined in detail after a corresponding feasibility check, which is carried out after awarding by the client.

- 3.1 In any case, a feasibility check must be carried out prior to final awarding for the integration of the special articles. This feasibility check will only be carried out in the course of awarding by the client under the provision of all necessary detailed drawings approved by the client (*production and implementation plans*). After successful completion of the feasibility check, AKS will inform the client whether the desired integration can be realised.
- 3.2 The created special articles are only applicable for the application cases defined by the client in the detailed plans.
- 3.3 The special profiles can only be used for the AVOR (work preparation), that is for the creation of BOMs and material extracts. Data for machine control are not included in the enclosed offer per profile. A CAM data processing can be offered separately if required.
The services offered can only be used in conjunction with the SchüCal software solutions provided by AKS.
- 3.4 The data / results sent to the client have been carefully checked, but ALUKÖNIGSTAHL assumes no liability for the accuracy - our general terms and conditions of sale and delivery apply in this regard.
- 3.5 Any changes subsequently requested or caused by the client will be charged after separate written order according to effort, at an hourly rate of 118.00 Euros.

SchüCal Data

We have carried out the input carefully, but we do not guarantee the accuracy and completeness of the results. In order to ensure faultless serial production, the manufacturing of a sample module by the processor is absolutely necessary, as well as a detailed data check.

Notes on import:

1. Download and run the file using the link below
2. Close SchüCal
3. Run "V8_DeltaDistrict_SchueCalProfiledata_V01.exe"
4. Run "V8_DeltaDistrict_SchueCalDatabaseImport_V01.exe"
5. Run "V8_DeltaDistrict_Activation_SchuecoUSC65.exe"
6. Start SchüCal

By downloading the data, I take note of the above notes / conditions: [Link](#)

SchüCal Data V02

We have carried out the input carefully, but we do not guarantee the accuracy and completeness of the results. In order to ensure faultless serial production, the manufacturing of a sample module by the processor is absolutely necessary, as well as a detailed data check.

Notes on import:

1. Download and run the file using the link below
 2. Close SchüCal
 3. Run "V8_DeltaDistrict_SchueCalProfiledata_V02.exe"
- Only at the first installation:
4. Run "V8_DeltaDistrict_SchueCalDatabaseImport_V01.exe"
 5. Run "V8_DeltaDistrict_Activation_SchuecoUSC65.exe"
 6. Start SchüCal

By downloading the data, I take note of the above notes / conditions: [Link](#)

SchüCal Data V03

We have carried out the input carefully, but we do not guarantee the accuracy and completeness of the results. In order to ensure faultless serial production, the manufacturing of a sample module by the processor is absolutely necessary, as well as a detailed data check.

Notes on import:

1. Download and run the file using the link below
 2. Close SchüCal
 3. Run "V8_DeltaDistrict_SchueCalProfiledata_V03.exe"
1. Copy processing groups into the folder: *C:\ProgramData\Schueco\SchueCal\User\Loca\Workings*
- Only at the first installation:
4. Run "V8_DeltaDistrict_SchueCalDatabaseImport_V01.exe"
 5. Run "V8_DeltaDistrict_Activation_SchuecoUSC65.exe"
 6. Start SchüCal

By downloading the data, I take note of the above notes / conditions: [Link](#)

SchüCal Data V04

We have carried out the input carefully, but we do not guarantee the accuracy and completeness of the results. In order to ensure faultless serial production, the manufacturing of a sample module by the processor is absolutely necessary, as well as a detailed data check.

Notes on import:

1. Download and run the file using the link below
2. Close SchüCal
3. Run "V8_DeltaDistrict_SchueCalProfiledata_V04.exe"
2. Copy processing groups into the folder: *C:\ProgramData\Schueco\SchueCal\User\Loca\Workings*
Only at the first installation:
4. Run "V8_DeltaDistrict_SchueCalDatabaseImport_V01.exe"
5. Run "V8_DeltaDistrict_Activation_SchuecoUSC65.exe"
6. Start SchüCal

By downloading the data, I take note of the above notes / conditions: [Link](#)

SchüCal Data V05

We have carried out the input carefully, but we do not guarantee the accuracy and completeness of the results. In order to ensure faultless serial production, the manufacturing of a sample module by the processor is absolutely necessary, as well as a detailed data check.

Notes on import:

1. Download and run the file using the link below
2. Close SchüCal
3. extract "V8_DeltaDistrict_SchueCalProfiledata_V05.zip"
3. Copy processing groups into the folder: *C:\ProgramData\Schueco\SchueCal\User\Loca\Workings*
Only at the first installation:
4. Run "V8_DeltaDistrict_SchueCalDatabaseImport_V01.exe"
5. Run "V8_DeltaDistrict_Activation_SchuecoUSC65.exe"
6. Start SchüCal

By downloading the data, I take note of the above notes / conditions: [Link](#)

SchüCal Data V06

We have carried out the input carefully, but we do not guarantee the accuracy and completeness of the results. In order to ensure faultless serial production, the manufacturing of a sample module by the processor is absolutely necessary, as well as a detailed data check.

Notes on import:

1. Download and run the file using the link below
2. Close SchüCal
3. extract "V8_DeltaDistrict_SchueCalProfiledata_V06.zip"
4. Copy processing groups into the folder: *C:\ProgramData\Schueco\SchueCal\User\Loca\Workings*
Only at the first installation:
4. Run "V8_DeltaDistrict_SchueCalDatabaseImport_V01.exe"
5. Run "V8_DeltaDistrict_Activation_SchuecoUSC65.exe"
6. Start SchüCal

By downloading the data, I take note of the above notes / conditions: [Link](#)

SchüCal Data V07

We have carried out the input carefully, but we do not guarantee the accuracy and completeness of the results. In order to ensure faultless serial production, the manufacturing of a sample module by the processor is absolutely necessary, as well as a detailed data check.

Notes on import:

1. Download and run the file using the link below
2. Close SchüCal
3. Run "V8_DeltaDistrict_SchueCalProfiledata_V07.exe"
5. Copy processing groups into the folder: *C:\ProgramData\Schueco\SchueCal\User\Loca\Workings*

Only at the first installation:

4. Run "V8_DeltaDistrict_SchueCalDatabaseImport_V01.exe"
5. Run "V8_DeltaDistrict_Activation_SchuecoUSC65.exe"
6. Start SchüCal

By downloading the data, I take note of the above notes / conditions: [Link](#)